



**Going into 'Ballgame Mode' has a number of advantages over completely turning off your HD Radio digital carriers. See below!**

**REMINDER !!**

**After each event you may want to have someone check to see if your board op has returned to normal blending and regular analog audio delay.**

**Previous HD Radio Tech Bulletins are now available on our website:**

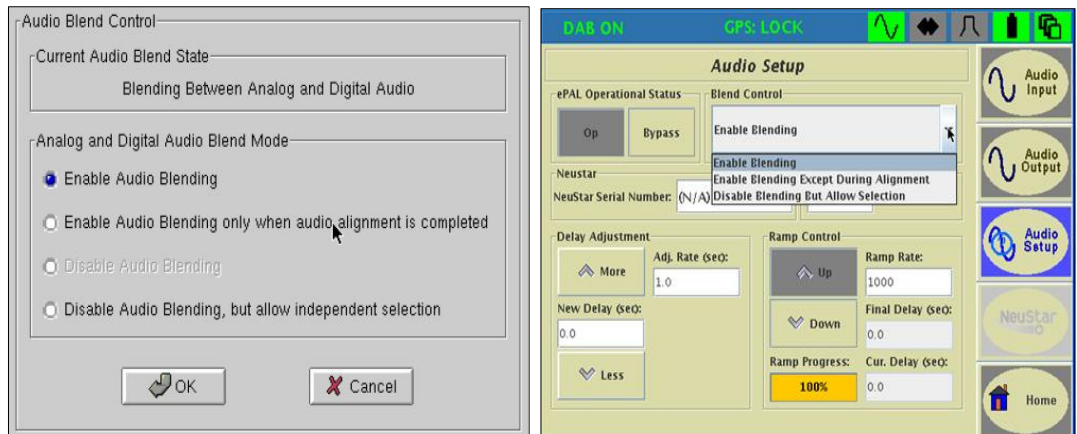
[http://www.ibiquity.com/broadcasters/quality\\_implementation/tech\\_bulletins](http://www.ibiquity.com/broadcasters/quality_implementation/tech_bulletins)

## HD Radio™ Tech Bulletin

iBiquity Digital is issuing this tech bulletin in an effort to help broadcast engineers maintain quality HD Radio operations and increase the benefits of HD Radio technology to its growing listener base. We plan to issue future bulletins as necessary.

### Exporter/Exciter Blend Control / 'Ballgame Mode'

Here are a few tidbits of information for those stations that broadcast live sporting events and may not be using the blend control features available during those events.



If you are the engineer of a station that broadcasts live sporting events, you may want to consider using one of the non-blending modes (sometimes known as **'Ballgame Mode'**). These modes are available in the more recent software updates.

There are advantages to switch to the **'Ballgame Mode'** rather than turning off the HD Radio carriers or just turning off your analog delay. The first is that the call letters and any PSD text remains displayed on your listeners' HD Radio receivers. And, if you're a FM station, your multicast channels remain on the air. This mode will also send a bit to the HD Radio receivers, telling them not to blend back and forth since there is no analog delay present.

These modes can be found on or through the same GUI screen as the diversity delay adjustments on all manufacturer's exporters and exciters. To use the **'Ballgame Mode'**, choose one of the following:

- **Enable Audio Blending Except During Alignment**
- **Disable Blending But Allow (Independent) Selection**

Many stations use the **'Enable Audio Blending Except During Alignment'**. In this mode your operator will need to engage only 2 buttons from the beginning to the end of the event. By pressing the Ramp Down button, the system will automatically go into the No Blend / **'Ballgame Mode'** and stay there until the Ramp Up button is pushed and the analog audio delay is back into the correct time delay.

### Thank you for your continued support!

Please direct any questions, comments or report technical issues to: Tom Walker, iBiquity Digital Corporation, Columbia, MD, [walker@ibiquity.com](mailto:walker@ibiquity.com)